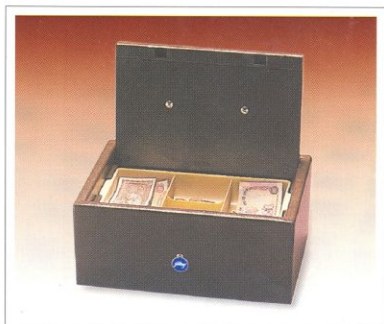


# COFFER AND CASH BOX

*Godrej*  
SECURITY  
EQUIPMENT

AN ISO 9001 & ISO 14001 BUSINESS  
*Securing peace of mind. At home, at work.*



ROUND THE CLOCK PROTECTION  
FOR YOUR VALUABLES



**Godrej**

## CASH BOX

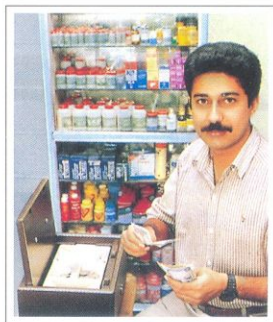
Godrej Cash Boxes are designed for protection of a limited amount of cash which needs to be kept handy for everyday use. They are ideal for use in small shops and offices, restaurants, petrol pumps, departmental stores, cinema houses, cash collection centres, etc. At homes they can also be used for safe keeping of jewellery meant for daily use.

### Some unique features of Godrej Cash Boxes are:

- Body built out of single plate using multibend construction and electrically welded for greater strength and rigidity.
- Bottom plate welded to the body from the inside making its dislodgement impossible.
- Rigid steel lid, double bent along its locking edge and mounted on solid concealed pivots, making it virtually

tamper- proof.

- Detachable anchor plate provided at the bottom allows easy fixing and unfixing of the cash box at the place of use i.e. table, counter, shelf of a cupboard, etc. A single turn of the key is sufficient to lock or unlock the lid and anchor plate simultaneously.
- Sturdy locking mechanism actuated by 6-lever Godrej unpickable lock with stainless steel keys in duplicate.
- Oven-baked enamel paint for attractive and lasting finish.
- Snug-fitting, removable, 3-compartment tough plastic coin tray provided as standard accessory.
- If required, Godrej dual control Gordian Lock and / or coin slot can be provided at extra cost.



### Wide After-Sales-Service Network

To meet the needs of the customers anywhere in the country even in the remotest area, Godrej has a nationwide sales and service network with 25 branches and over 700 dealers. This ensures easy, and prompt attention to all your needs.

## COFFER

DIMENSIONS(mm)		
H	W	D
255	360	305
NET WT. 20 KGS.		
GROSS WT. 20.5 KGS.		

Colour : Char Brown in Structure finish with a Golden facia  
Azure Blue in Structure finish with a Silver facia

## CASH BOX

DIMENSIONS(mm)		
H	W	D
150	355	255
NET WT. 13 KGS.		
GROSS WT. 13.5 KGS.		

Colour : Char Brown in Structure finish

- Tolerances : Weight :  $\pm 3\%$       • Dimensions :  $\pm 1\%$
- All dimensions & weights are in matrix system and are approximate.



**GODREJ & Boyce Mfg. Co. Ltd.**

**Registered office :**

Plant 17, Pirojshanagar, Vikhroli, Mumbai - 400 079.  
Tel.: 5596 4751 to 5596 4763. Fax: 91-22- 5596 1509

**Website :** www.godrej.com

**Branches:**

**WEST:** • Mumbai: 55961241/ 1242 • Ahmedabad: 55000028/34, 5833767/267  
• Bhopal: 2761130 • Jabalpur: 2313499 • Pune: 26337341/7332

**NORTH:** • Delhi / Faridabad / Ghaziabad : 55507140/7142  
• Chandigarh: 5012111 • Jaipur: 2545596 • Lucknow: 2627712

**EAST:** • Kolkata: 2357 6820 • Bhubaneshwar: 0674-2588165  
• Guwahati: 2730544 • Ranchi: 2510558 • Patna: 2212115/116

**SOUTH:** • Bangalore: 56630621-630 • Kochi: 4060600-631  
• Chennai: 555 44552 • Hyderabad: 55431120  
• Visakhapatnam: 2746511-513.