

*Godrej*



**Defender Plus**  
STRONG ROOM DOORS



***Reinforced Security.***



Godrej has introduced a new range of Strong Room Doors to help Banks and financial institutions meet their security requirements. The Defender Plus Class I equivalent of Class M (as per UL 608) doors recommended for small to medium size safe deposit locker installations. The Defender Plus Class II equivalent of Class I (as per UL 608) doors recommended for larger vaults as well currency chests.

#### Defender Plus Class I Door Slab

The thickness of the overall composite slab is 18mm ( $\frac{3}{4}$ "") made of a layer of flame and arc resistant (special) alloy which provides dependable protection against fire and attacks of power drilling, oxyacetylene flame and arc cutting. It is further fortified by a composite 62mm ( $2\frac{1}{2}$ "") layer of Godrej Double Duty Barrier material. This dual protection is provided over the entire lock case area. The total thickness of protective layer is 85mm ( $3\frac{5}{16}$ "") over the locks and other vital parts of the door. These Class I doors qualify as per Class 'C' (TRTL 15) of IS 11188.

#### Defender Plus Class II Door Slab

This door has a 25mm (1") slab of Torch and Drill Resistant Matrix Slab. A 65mm ( $2\frac{9}{16}$ "") layer of Godrej Double Duty Barrier further fortifies this slab, making it virtually invincible from attacks of sledge hammers, hydraulic jack, power drills, torch and oxyacetylene flame. The total thickness of the protective layer over the locks and other vital parts is 105mm ( $4\frac{1}{8}$ ""). These Class II doors qualify as per Class 'B' (TRTL 30) of IS 11188.



TDR Matrix used for higher grades of safes

#### Door frame

Tested quality 10mm ( $\frac{5}{16}$ "") thick M.S. plate is used for fabricating the one piece bent angle door frame. For strength and rigidity the door frame is suitably reinforced along the height and width. A special 'Solid-jamb' is bolted to the frame.

#### High security locks

Defender Plus Doors are fitted with two Godrej superior quality, dual control, high precision, 8-lever locks. Stainless steel keys are supplied in duplicate. A Godrej 4-wheel numerical lock which offers 100 million combinations for setting and resetting can be provided.

#### Protection against fire

Godrej Double Duty Barrier material provides reliable protection against fire.

#### Automatic re-locking devices

This feature offers additional security, incase an attempt is made with the help of explosives or mechanically. This sensitive device gets actuated automatically and the door is deadlocked which cannot be opened.

#### Drill Defeat Shield

Locks and re-locking devices are protected by a specially designed drill defeat shield which defeats the attempts to drill open the locks.

#### Extra tough bolt work mechanism

To secure the door, 12 shooting bolts (each of 38mm i.e  $1\frac{3}{8}$ " dia) are provided, six in front and six at the rear which slide behind the tough "solid-jamb" rebate. The bolts can be activated simultaneously by the movement of the handle.

#### Impact resisting shaft for handle

Attractively designed, convenient to use handles are fitted on an impact resisting shaft which is meant to defeat attempts to hammer it in another unique feature of Godrej Defender Plus doors.

#### Grille Gate

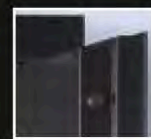
A well-designed grille gate is provided, which is secured with Godrej high precision 8-lever lock, operable from inside as well as outside.

#### Anti - corrosion treatment

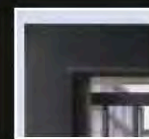
All steel components are given a thorough twelve stage anti-corrosion treatment followed by rust inhibiting paint for greater.

#### Certification

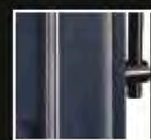
- As per IS 11188
- Approved & Listed by the Bureau of Indian Standards (BIS)
- Successfully tested for burglary and fire resistance at the Central Building Research Institute (CBRI), Roorkee, the only accredited institute of its kind in India that carries out such tests.



Fortified Door Slabs



Door frame



Extra tough bolt work mechanism



Adjustable Strap Hinge

## Specifications

<b>Overall size H x W (mm)</b> (Inches)	2250 x 1320 88 $\frac{1}{2}$ x 52
<b>Clear opening h x w (mm)</b> (Inches)	2003 x 910 78 $\frac{3}{16}$ x 36
<b>Thickness of door with lockcase T (mm)</b> (Inches)	187 7 $\frac{3}{16}$
<b>Thickness over lock &amp; vital parts (mm)</b> (Inches)	105 4 $\frac{1}{8}$
<b>Recommended for wall thickness (mm)</b> (Inches)	380 - 460 15 - 18
<b>Weight with Packing (approx.) (Kgs)</b> (Pounds)	1300 2866



TAKE NO CHANCES

### Godrej & Boyce Mfg. Co. Ltd. Security Equipment Division.

Regd. Off.: Plant 17, Pirojshanagar, Vikhroli, Mumbai 400079. INDIA.  
Tel.: (91-22) 67964753-63. Fax: (91-22) 67961509.  
Email: secure@godrej.com Website: www.godrej.com

#### GODREJ OVERSEAS OFFICES

Godrej & Boyce, P.O. Box 8549, A2-004, SAIF Zone, Sharjah, UAE. Tel.: 971 6 5570866.  
Fax: 971 6 5570966. Email: godrejdb@emirates.net.ae, ratan@godrej.ae, homiyar@godrej.ae

Godrej & Boyce Mfg. Co. Ltd., Post Box No. 21030-00505, Mamlaka Road, House No. A3,  
Ground Floor, Next to Stella Awinja Hostel, Nairobi, Kenya.  
Tel.: 00 254 20 2044123. Mobile: 00 254 733647187. Email: fredrickcorrea@godrejafrika.com

Godrej & Boyce Mfg. Co. Ltd.  
Dabab Street, Opposite Riyadh Chamber of Commerce, PO Box: 221890,  
Riyadh: 11311. Kingdom of Saudi Arabia. Cell: 00 966 501 365788  
Tel.: 00 966 1 4025345 / 4024068. Fax: 00 966 1 4025369  
Email: godrejdb@emirates.net.ae, taj@godrejsaudi.com, ranga@godrejsaudi.com

In view of the Godrej policy of continuous development and improvement, the dimensions and specifications may be changed without prior notice or obligation.  
Colours of the products shown in this catalogue may not match the actual colour of the product due to printing limitations.