

**WORLD CLASS
OFFICE STORAGE
SYSTEMS**



ABOUT US

Manufacturers of World Class Steel Storage Systems

Godrej & Boyce Mfg. Co. Ltd. Interio SEZ Unit

We commenced our operations in 1992 as Mercury Manufacturing Company Ltd. in a Special Economic Zone - MEPZ, Chennai, India as an export oriented unit.

Mercury was a fully owned subsidiary of Godrej & Boyce Manufacturing Co. Ltd. which is headquartered in Mumbai, India.

On 3rd October 2017, Mercury Mfg. Co. Ltd. has merged with Godrej & Boyce Mfg. Co. Ltd. under Godrej Interio division. Henceforth, Mercury Manufacturing Co. Ltd. will be known as Godrej & Boyce Mfg. Co. Ltd. Interio SEZ Unit. However, the 'Mercury' brand and its range of product offerings continue to exist.

We are in the business of designing and manufacturing steel storage systems catering to all major industry segments in select territories across the world. We have built a stellar reputation for producing customized steel storage solution at an unmatched turnaround rate.

We have sailed a long way in the Steel Furniture Industry and have introduced notable volume of products to the market. It is a practice for us to continuously evolve our product offering.

We aim at providing the most appropriate storage solution that matches with the contemporary design and usage trend.

Our product construction concept and supply chain method have resulted in a reduced carbon footprint.

Mission : Enriching life by transforming home and work spaces.

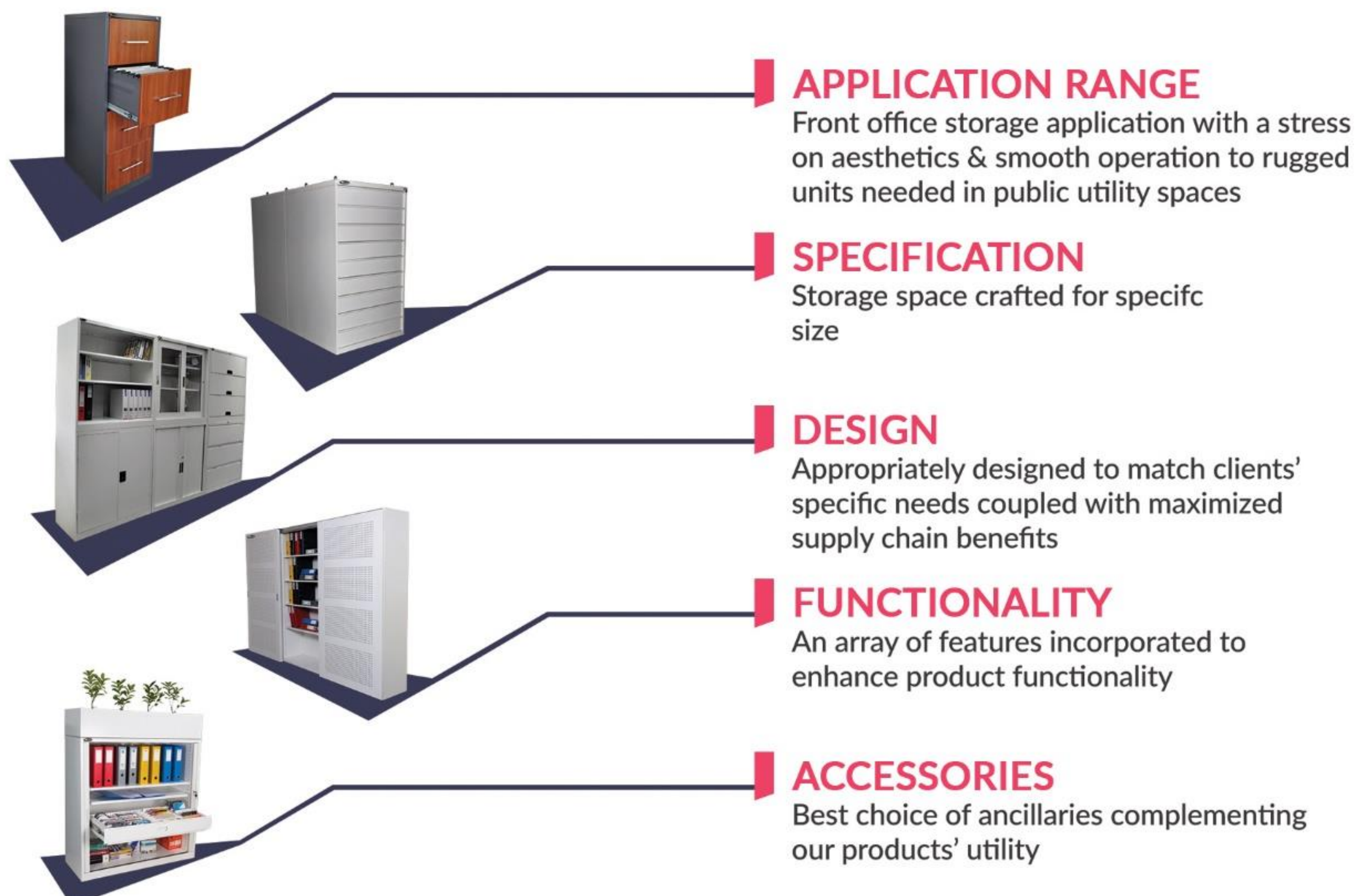
Vision : Godrej - the choice for home and work space solutions

Values : Trust, Integrity, Respect, Environment, To Serve

VERSATILITY IN PRODUCTS & CUSTOMIZATION

As a business strategy, we are persistently gearing to develop innovative products that address storage needs both on utility and aesthetics. We enhance our channel partners' competitiveness through customized product offerings.

All our products adapt to the flat pack concept of construction (complete knock down) making them easy to pack, ship and assemble



CUSTOMIZATION

MOBILE PEDESTALS



Product Code:
M-PED-64-515-BBF

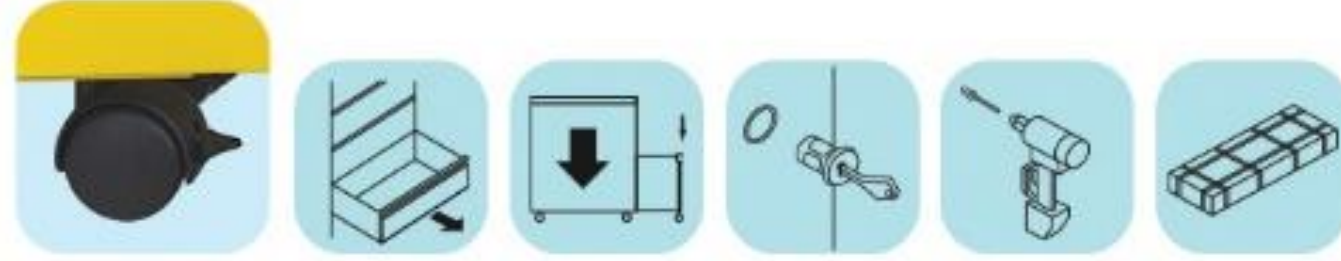
AUSTRALIAN STANDARD
5079.3:2003(R2014)
CERTIFIED

VARIANTS	PRODUCT CODE	OUTER DIMENSION
BBF	M-PED-64-515-BBF	635 x 470 x 515
FF	M-PED-64-515-FF	635 x 470 x 515
BBBB	M-PED-64-515-BBBB	635 x 470 x 515

STORAGE SPACE

Box	105 x 380 x 395
File	235 x 380 x 395

Standard Attributes



Lockable Castors

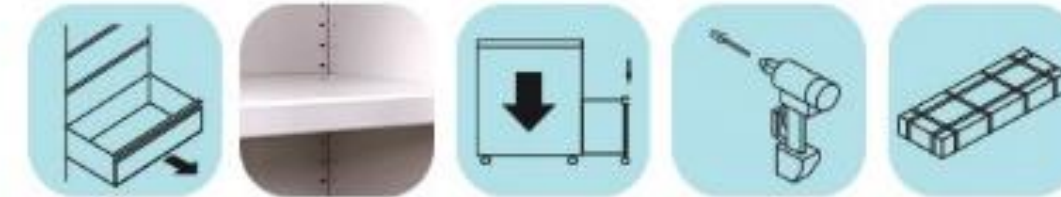
PULL-OUT TOWER



Product Code: VPO-FEC-2AS-1AC

PRODUCT CODE	OUTER DIMENSION	SHELF DIMENSION
VPO-FEC-2AS-1AC	1250 x 400 x 875	W377 x D319

Standard Attributes



Options



SLEEKLINE PEDESTALS



Product Code: SL-M-PED-BBF

VARIANTS	PRODUCT CODE	OUTER DIMENSION
BBF	SL-M-PED-BBF	610 x 460 x 472
FF	SL-M-PED-FF	610 x 460 x 472

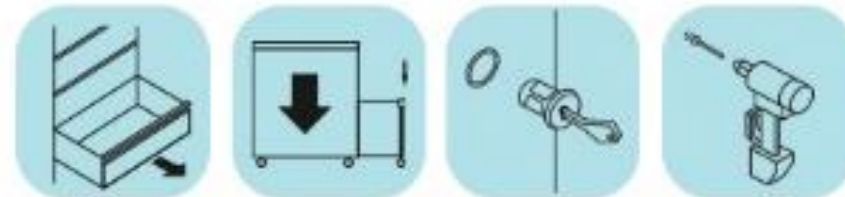
STORAGE SPACE

Box	60 x 380 x 438
File	250 x 380 x 438

Standard Attributes



Lockable Castors



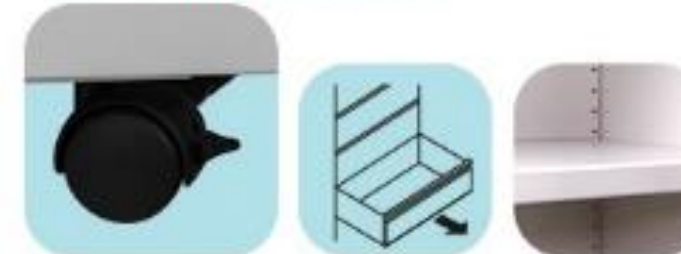
CADDY



Product Code: SL-MCU-RS-BBF-PPT-WS-SDA

VARIANTS*	PRODUCT CODE	OUTER DIMENSION
Tambour Door with Right Drawer	SL-MCU-RS-BBF-PPT-WS-SDA	610 x 1050 x 472
Tambour Door with Left Drawer	SL-MCU-LS-BBF-PPT-WS-SDA	610 x 1050 x 472
Open Shelf with Right Drawer	MCU-RS-BBF-T-OS	610 x 1050 x 472
Open Shelf with Left Drawer	MCU-LS-BBF-T-OS	610 x 1050 x 472

Standard Attributes

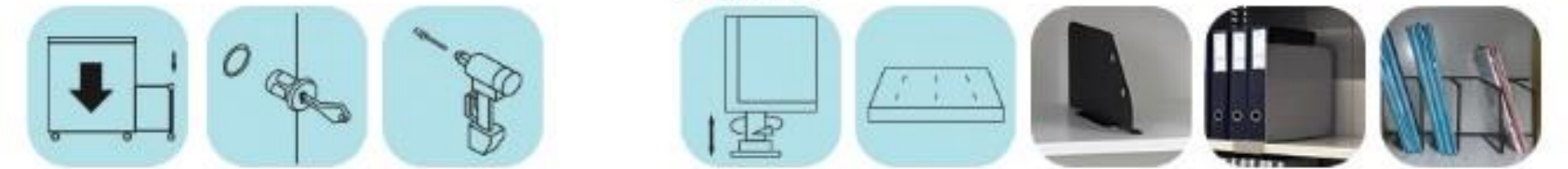


Lockable Castors

STORAGE SPACE

Box	60 x 380 x 438
File	250 x 380 x 438
Shelf with Tambour Door	W 510 x D 414
Open Shelf	W 585 x D 434

Options



* while viewing the image

HANDLE OPTIONS

PEDESTALS		
Handle Type	Code	Mobile
Full length Pull	T	Yes
Side Pull	SL	Yes
Recessed Pull	IA/IASP/IACO	Yes(S)



FULL LENGTH PULL

CODE: ANY OF THE BELOW
WITHOUT COLOUR STRIP: T (S)
WITH COLOUR STRIP: CS



RECESSED PULL

CODE: ANY OF THE BELOW
SAME COLOUR: IA
ALUMINIUM COLOUR: IASP (S)
COLOUR OPTION: IACO

LOCK OPTIONS

PEDESTALS		
Lock Type	Code	Mobile
Key Lock	FL	Yes(S)
Electronic Number Lock	EL	Yes



KEY LOCK



ELECTRONIC NUMBER LOCK

FILING CABINETS



ANSI BIFMA
X5.3-2007 Part-2, X5.9-2004
CERTIFIED

AUSTRALIAN STANDARD
5079.2:2003
CERTIFIED

BRITISH STANDARD
4875-7:1998, 4875-8:1998
CERTIFIED

VARIANTS	PRODUCT CODE	OUTER DIMENSION	STORAGE SPACE
2 Drawers	2DFCM-Lg	710 x 470 x 620	255 x 375 x 550
	2DFCM-Lt	710 x 395 x 620	255 x 300 x 550
3 Drawers	3DFCM-Lg	1015 x 470 x 620	255 x 375 x 550
	3DFCM-Lt	1015 x 395 x 620	255 x 300 x 550
4 Drawers	4DFCM-Lg	1320 x 470 x 620	255 x 375 x 550
	4DFCM-Lt	1320 x 395 x 620	255 x 300 x 550
5 Drawers	5DFCM-Lg	1625 x 470 x 620	255 x 375 x 550
	5DFCM-Lt	1625 x 395 x 620	255 x 300 x 550

DESIGN VARIANT

Drawers with Wooden Finish

Product Code: 4DFCM-Lg wooden front



Standard Attributes



Options



HANDLE OPTIONS



RECESSED PULL (S)

CODE: ANY OF THE BELOW
SAME COLOUR: IA
ALUMINIUM COLOUR: IASP (S)
COLOUR OPTION: IACO



FULL LENGTH PULL

CODE: ANY OF THE BELOW
WITHOUT COLOUR STRIP: T (S)
WITH COLOUR STRIP: CS



ALUMINIUM HANDLE

CODE: AH



SS BOW HANDLE

CODE: BH

LOCK OPTIONS



KEY LOCK (S)

CODE: FL



ELECTRONIC NUMBER LOCK

CODE: EL

LATERAL FILING CABINETS

ANSI BIFMA

X5.3-2007
CERTIFIED

AUSTRALIAN STANDARD

5079.1:2003(R2014)
CERTIFIED



Product Code: LF5M

Product Code: LF4M

Product Code: LF3M

Product Code: LF2M

VARIANTS	PRODUCT CODE	OVERALL DIMENSION	STORAGE SPACE
2 Drawers	LF2B	710 x 1066 x 463	245 x 972 x 395
	LF2M	710 x 914 x 463	245 x 820 x 395
	LF2S	710 x 762 x 463	245 x 668 x 395
3 Drawers	LF3B	1015 x 1066 x 463	245 x 972 x 395
	LF3M	1015 x 914 x 463	245 x 820 x 395
	LF3S	1015 x 762 x 463	245 x 668 x 395
4 Drawers	LF4B	1320 x 1066 x 463	245 x 972 x 395
	LF4M	1320 x 914 x 463	245 x 820 x 395
	LF4S	1320 x 762 x 463	245 x 668 x 395
4 Drawers with 5th Flipper door	LF5B	1770 x 1066 x 463	245 x 972 x 395, FD 350 x 1018 x 438
	LF5M	1770 x 914 x 463	245 x 820 x 395, FD 350 x 866 x 438
	LF5S	1770 x 762 x 463	245 x 668 x 395, FD 350 x 714 x 438

Standard Attributes



File Hanger & Cradle Frame for legal size files

Options



Counter Weight
CODE: CWT

Flipper Door with Pull-out Tray
CODE: PT

Dual Cradle Frames for A4 size files
CODE: CF

HANDLE OPTIONS



RECESSED PULL (S)

CODE: ANY OF THE BELOW
SAME COLOUR: IA
ALUMINIUM COLOUR: IASP (S)
COLOUR OPTION: IACO



FULL LENGTH PULL

CODE: ANY OF THE BELOW
WITHOUT COLOUR STRIP: T (S)
WITH COLOUR STRIP: CS



ALUMINIUM HANDLE

CODE: AH



SS BOW HANDLE

CODE: BH

LOCK OPTIONS



KEY LOCK (S)

CODE: FL



ELECTRONIC NUMBER LOCK

CODE: EL

SWING DOOR CUPBOARDS



Product Code: STM3

ANSI BIFMA

X5.9-2004
CERTIFIED

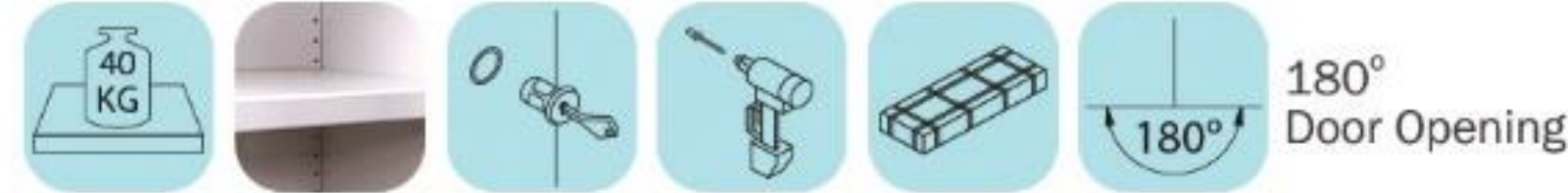
(only for STM series)

PRODUCT VARIANT

Ready To Assemble (RT)

VARIANTS	PRODUCT CODE		OVERALL DIMENSION	STORAGE SPACE	
	STM SERIES	RT SERIES		STM SERIES	RT SERIES
Extra Full Height	STM4	RT4	2000 x 914 x 463	W 910 x D 429	W 910 x D 402
Full Height	STM3	RT3	1830 x 914 x 463	W 910 x D 429	W 910 x D 402
Counter Height	STM1	-	1320 x 914 x 463	W 910 x D 429	-
Counter Height	STMA	RTA	1015 x 914 x 463	W 910 x D 429	W 910 x D 402

Standard Attributes - all products



180°
Door Opening

Construction requires
only Fastener

Options - all products



Dual Shelf
CODE: DF

105° Door Opening
only for STM series
CODE: N Series

Product Code: RT3



SLIDING DOOR CUPBOARDS



Product Code: FSLDG1

VARIANTS	PRODUCT CODE		OVERALL DIMENSION	STORAGE SPACE
	GLASS DOOR	STEEL DOOR		
Extra Full Height	FSLDG2	FSLDS2	2000 x 1200 x 450	1196 x 362
Full Height	FSLDG1	FSLDS1	1830 x 914 x 463	910 x 375
	FSLDG3	FSLDS3	1830 x 1500 x 463	1496 x 375
Special Counter Height	HSLDG4	HSLDS4	1320 x 914 x 463	910 x 375
	HSLDG5	HSLDS5	1320 x 1500 x 463	1496 x 375
Counter Height	HSLDGA	HSLDSA	1015 x 914 x 463	910 x 375
	HSLDG3	HSLDS3	1015 x 1500 x 463	1496 x 375

DESIGN VARIANT

Steel Sliding Door

Standard Attributes - all products



Toughened Glass
for Glass Door only

Options - all products



Product Code: FSLDS1



TAMBOUR DOOR CUPBOARDS



Product Code: TDM4 with Options

VARIANTS	PRODUCT CODE	OVERALL DIMENSION	STORAGE SPACE
Full Height	TDM4	2000 x 1200 x 463	1050 x 416
	TDM3	2000 x 1000 x 463	850 x 416
	TDM3A	2000 x 900 x 463	750 x 416
Counter Height	TDM2	1320 x 1200 x 463	1050 x 416
	TDM1	1320 x 1000 x 463	850 x 416
	TDM1A	1320 x 900 x 463	750 x 416

AUSTRALIAN STANDARD

AS/NZS 4790:2006 (R 2016)
CERTIFIED

- Other Height options are 1200, 1015 and 1000
- All products are available in widths of 1200, 1000 and 900

Standard Attributes



Options



Pull-out
Media Drawer
CODE: TDD

Pull-out
File Frame
CODE: PFF

Pull-out
Reference Shelf
CODE: PRS

Dual Shelf
CODE: DF

HANDLE OPTIONS

HANDLE TYPE	CODE	SWING DOOR
Plastic Flush Handle integrated with Lock	P	Yes (S)
Aluminium	AH	Yes



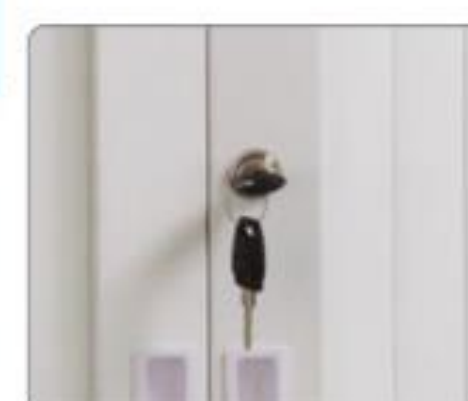
PLASTIC FLUSH
HANDLE WITH LOCK
CODE: P



ALUMINIUM
HANDLE
CODE: AH

LOCK OPTIONS

LOCK TYPE	CODE	TAMBOUR CUPBOARD
Key Lock	FL	Yes (S)
Electronic Number Lock	EL	Yes



KEY LOCK
CODE: FL



ELECTRONIC
NUMBER LOCK
CODE: EL

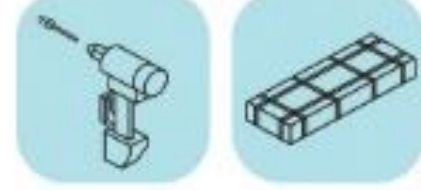
PLAN FILING CABINETS



Product Code: 6A0HPFC-PH

PRODUCT CODE	OVERALL DIMENSION	STORAGE SPACE
6A0HPFC-PH	628 x 1375 x 960	75 x 1274 x 892
A0VDSC-10HC	1420 x 410 x 1015	-

Standard Attributes - both variants



Options of 6A0HPFC-PH



Stand
CODE: B

PRODUCT VARIANT

Vertical Plan Filing Tower



Product Code: A0VDSC-10HC

MULTIMEDIA FILING CABINETS



Product Code: MMC-7H

VARIANTS	PRODUCT CODE	OVERALL DIMENSION	STORAGE SPACE
Multimedia Cabinet	MMC-7H	1320 x 790 x 620	155 x 695 x 550
Card Index Cabinet	CIC-8X2	1490 x 540 x 620	135 x 445 x 550
Microfiche Cabinet	LC-10H	1370 x 700 x 620	110 x 615 x 550

Standard Attributes - all variants



Handle Options



Full Length Pull
CODE: ANY OF THE BELOW
WITHOUT COLOUR STRIP: T (S)
WITH COLOUR STRIP: CS



Recessed Pull (S)
CODE: ANY OF THE BELOW
SAME COLOR: IA
METALLIC COLOR: IASP (S)
COLOR OPTION: IACO

Options



For MMC-7H
CODE: CD-Insert

DESIGN VARIANT

Card Storage Cabinet



Product Code: CIC 8x2

Dimensions in H x W x D | Measurements in mm | (S) - Standard Offering

LEGEND



Anti Tilt
Mechanism



Adjustable Shelf



Pop-riev
Construction



Leveller
CODE: HA



Sliding Shelf Divider
CODE: ADP



Front Caster for
Anti Tilt



40KG Uniformly
Distributed Shelf Load



Complete
Knockdown



Slotted Shelf
CODE: SS



Toast Rack
CODE: TR



Full Drawer
Accessibility



Barrel Exchangeable
Lock

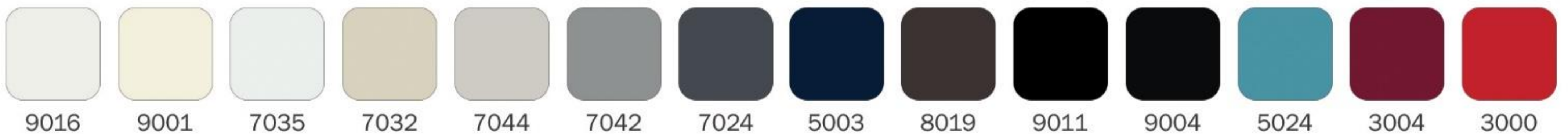


Slotted Shelf Divider
CODE: SD



Planter Box
CODE: PB

CLASSIC SHADES [COLOUR CODE IN RAL]



Refer to our SHADE CARD for the complete range of 50 standard colours and types of surface finishes.

DISCLAIMER

- In pursuit of constant product development and design, the company reserves the right to amend, alter, modify or discontinue product, configuration or color without prior notice.
- All measurements are subject to tolerance level of $\pm 2\text{mm}$ or $\pm 5\%$ as the case maybe.
- Optional features/accessories, non-standard powder coating shades/finish/property are available at additional cost and may require extra delivery period.
- Colour shades shown in this Catalogue may not truly correspond to actual shade due to limitations of printing/electronic display units.
- The product images are only representative and the actual products delivered will correspond to item codes and or descriptions used.



GODREJ & BOYCE Mfg. Co. Ltd. Interio SEZ Unit

Formerly known as Mercury Mfg. Co. Ltd.

Factory: D3, MEPZ – Special Economic Zone, Tambaram, Chennai - 600045, INDIA

Phone: +91 - 44 - 22628002, 22628593 | Fax: +91 - 44 - 22628344

E-mail: sez.sales@godrej.com | Web: www.mercury.godrej.com